

# MONTHLY MEMBERSHIP PROGRESS REPORT

District 14 H

Results as of: 3/31/2026

GMT:

LOCATION PENNSYLVANIA

GMT CA

| Clubs                 |               |           |               |
|-----------------------|---------------|-----------|---------------|
| RESULTS FOR 2025-2026 |               |           |               |
| QUARTER               | NEW CLUB GOAL | NEW CLUBS | DROPPED CLUBS |
| JULY/AUG/SEPT         | 0             | 0         | 0             |
| OCT/NOV/DEC           | 1             | 0         | 0             |
| JAN/FEB/MAR           | 0             | 0         | 0             |
| APR/MAY/JUNE          | 0             | 0         | 0             |

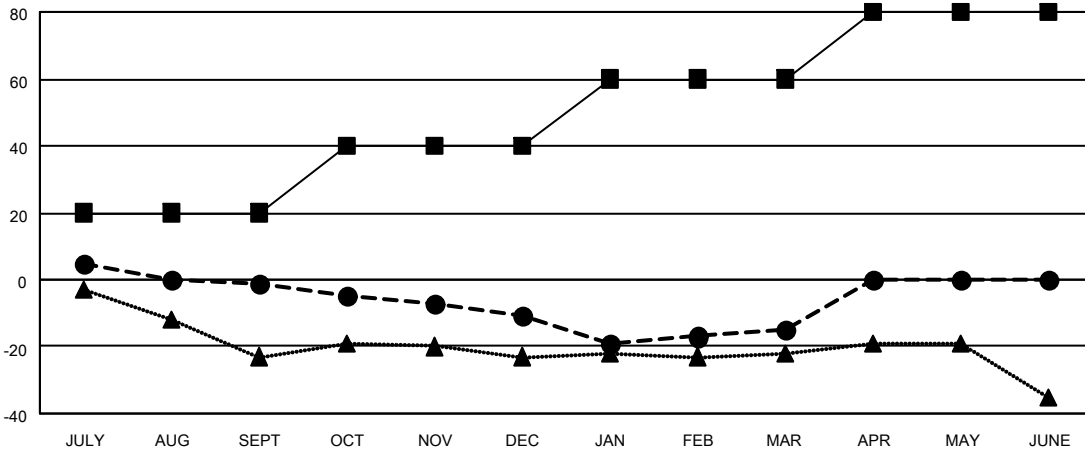
| Members               |                        |                      |  |
|-----------------------|------------------------|----------------------|--|
| RESULTS FOR 2025-2026 |                        |                      |  |
| QUARTER               | MEMBER GROWTH NET GOAL | MEMBER GROWTH ACTUAL | DROPPED MEMBERS ACTUAL (including transfers) |
| JULY/AUG/SEPT         | 20                     | 14                   | 15   |
| OCT/NOV/DEC           | 20                     | 1                    | 11   |
| JAN/FEB/MAR           | 20                     | 14                   | 17   |
| APR/MAY/JUNE          | 20                     | 0                    | 0  |

GOALS AND ACTUAL NEW CLUBS CUMULATIVE



- - CURRENT YEAR GOALS FOR NEW CLUBS
- - CURRENT YEAR ACTUAL NEW CLUBS
- ▲ - LAST YEAR ACTUAL NEW CLUBS

GOALS AND ACTUAL MEMBERS CUMULATIVE



- - MEMBER GROWTH NET GOAL
- - MEMBER GROWTH ACTUAL
- ▲ - LAST YEAR MEMBERSHIP ACTUAL

|                        |   |                                    |
|------------------------|---|------------------------------------|
| DROPPED CLUBS: 0       | 13 CLUBS OF 26 ADDED 1 OR MORE NEW MEMBERS                | <b>GENDER DISTRIBUTION</b>         |
|                        |   | MALE 438 (73.00%)                  |
|                        |   | FEMALE 162 (27.00%)                |
| <b>DROPPED MEMBERS</b> | <a href="#">CLICK HERE FOR CUMULATIVE MEMBERSHIP DATA</a> | TOTAL FAMILY UNIT MEMBERS 107      |
| DECEASED 6             |   | FAMILY MEMBERS PAYING HALF DUES 58 |
| CLUB CANCELLED 0       |   |                                    |
| OTHER 37               |   |                                    |
| <b>TOTAL 43</b>        |   |                                    |